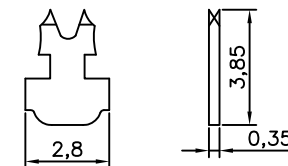
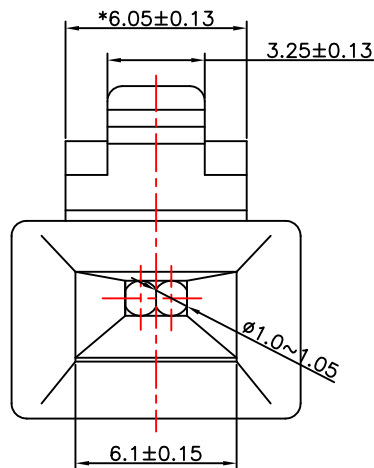
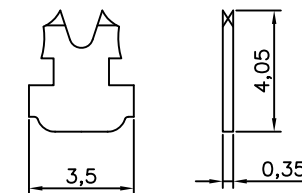


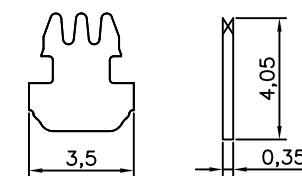
KB



平面二叉小端子



平面二叉标准端子



平面三爪端子

注：带“*”之尺寸为管控尺寸

Specification

1. Insulation Resistance: 1000 Megohms min.
2. Withstand Voltage: 1000V, AC/ minute
3. Durability: 750 mating circles min.
4. Selective Gold-plating:(f:3;6;15;30;50) micro inch

尺寸偏差: 0=0.2 0.X=0.10 0.XX=0.05 0.XXX=0.03		Coorle Technology	
品名 6P2C 方孔短弹片		Dong Guan City Coorle Electronic Tech.Co.,Ltd	
料号		材质: PC	图纸编号: QTCA101
制	作	审	核
批	准	日期: 2012.7.25	

ADD: No.1 Building Schindler Songshanlake town, DongGuan City,GuangDong Province
Tel:+86-0769-81605156; Fax:+86-0769-81605156 WWW.COORLE.CN